

Comfort *from* Experience.™



RapidZone™

®U.S. Registered Trademark  
Copyright © 2003 Honeywell International Inc.  
All Rights Reserved

75-7535-2

# Devices in Honeywell's RapidZone Solution

## Commercial Zoning System

Part Number	Product Description
W7760C2017	Excel 15C RapidZone controller, provides control for Rooftop Unit based on comfort needs of each zone. Also controls Bypass damper.
W7760A2011	Excel 15A Building Manager, provides Schedule to Zones Controllers and system alarms/diagnostics for RapidZone System.
W7751J2004 or W7751H2017	Excel 10 RapidZone controller with ML6161 actuator mounted directly to controller.
T7770C1002 or T7770A1006 T7560A1018	Wall modules with internal temperature sensor. T7770C and T7560A offer setpoint knob and bypass\LED operation.
S7760A2023	Excel 15 Command Display. Displays Zone and Rooftop status. Allows users to modify temperature setpoints and schedules.
Q7760A2001	SLTA-10 provided communication between the LonWorks Bus and a PC.
ZL7751A1029	RapidZone Software Version 3.x
ZL7762A1000	LonStation PC Workstation Software Version 4.x

# RapidZone Software Features

- The fastest way to a commercial zoning system. Configure and commission an average multiple Rooftop unit job in less then 60 minutes.
- Ease of use allows a Controls ‘Novice’ to successfully configure a commercial zoning system.
- Produces customized wiring diagrams that clearly define the wiring of every controller input and output. This reduces installation mistakes in the field and improves ease of future trouble-shooting.
- Flexibility to configure up to 10 different Rooftop systems with up to 18 zones per Rooftop unit, and up to 40 single-zone controllers.
- Roll over help text aids users in the configuration process.
- Ability to replicate similar Rooftop systems and/or Zones simplifies configuration process.
- Gives a complete materials checklist after the configuration process is completed.

## RapidZone Network Communications:

RapidZone Software communicated with the LonWorks® network using an SLTA-10 (Q7760A2001) on COM 1. (see form, 95-7511-2)

Other methods not explained in this document

- A PCMCIA PCC-10 (Q7752A) Card, for a laptop (see form, 95-7613) or
- A PCLTA-10 Network Adapter Card mounts inside of a PC  
(Use manufacturer’s instructions to install and commission it)

Setting up the Serial LonTalk® Adapter (SLTA-10) for:

## Local Connection and Controller Commissioning

- SLTA-10 (FTT-10) Network Adapter DIP switch settings:
  - Change the DIP switch settings to:
    - Switch 5 UP
    - Switches 1,2,3,4,6,7 and 8 DOWN
- Power the SLTA with one of the following:
  - Transformer with dc output of 9V, 500mA.
  - Or
  - 24Vac output transformer-black screw terminal block
- Connect COM 1 port of the PC to the SLTA-10 EIA-232 port with a standard serial cable (9 pin male to 9 pin female)
- Connect the SLTA-10 to the LonWorks® network using the network wires (2) connected to the orange screw terminal block
- Consult LonWorks® Bus wiring guidelines (74-2865-2)
- Once the configuration is complete, Saving Project enables the Network Button. Select the Network button to automatically connect to the LonWorks Network.
- **ASSIGN ID:** Controller Assign ID screen appears with a list of controllers on the project (Fig 1). Using the Service pin on each controller is generally the easiest method of assigning Controller ID numbers. The location of the Service Pins is provided in the Installation Instruction shipped with each controller. The controller ID may also be assigned by manually entering the 12-digit number located on each controller.
- Problems Connecting to Network

*If RapidZone is unable to connect to the network Fig. 2 appears.*

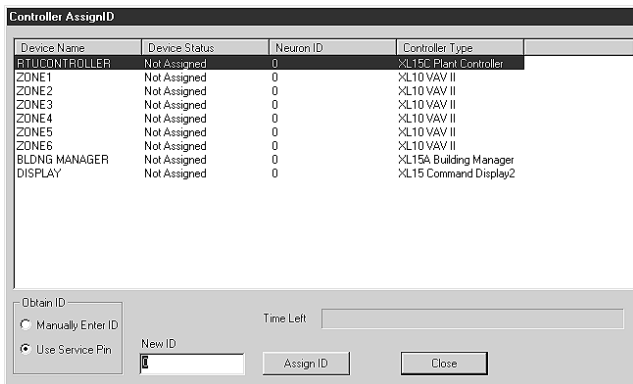


Fig. 1



Fig. 2

- Make sure the SLTA-10 is properly connected to COM1 of the PC. RapidZone default SLTA-10 communication settings to COM 1.
  - To connect the SLTA-10 to a different port select the following pull-down menus when off-line: *File->Communication Settings*  
Select the desired COM port.
- NOTE: Do not select *Modem* connection type. *Direct* connection is the only valid selection.

- Reapply power to the SLTA-10
    - If it fails after a second time, check the LonWorks® network connection and the SLTA-10 connection
  - After checking these connections, repeat previous steps
  - If it fails again, SLTA-10 may be faulty
  - If a known working SLTA-10 is available, try to connect with it
    - This helps determine if there is a fault in the SLTA-10
- **COMMISSION CONTROLLERS:** After assigning IDs, the RZConnect main Screen is displayed. To commission controllers, select Controller menu and choose Commission. Next, click on the Full Commission and sequential check boxes. Select all the controllers in the Available Controllers list and proceed to commission. The required order of commissioning is as follows: RapidZone controller, Zone controllers, Building Manager and the Command Display.

## **Remote Dial-Up**

When configuring the job in RapidZone and check the box labeled “Install Serial LonTalk Adapter (SLTA) for remote communication” which is located in the *Project* Screen.

The new RZConnect can be used for remote connection capability. This allows the user full access to the RapidZone job site via a modem.

## Quick Start:

After successfully installing RapidZone on your system, follow these steps to launch the application:

- Double click on the RapidZone icon on your desktop
- Select new or existing project
- Allow the program to guide you through the configuration process
- Save the current application
- Print out (or view via PC) custom wiring diagrams and materials list. These will help the installer properly setup the system
- Once the system is wired, return to RapidZone, Open Project and proceed to the Finish Screen. Click on the Network Icon to enter RZConnect.
- Assign Ids to each controller by selecting assign Ids tab and press service button on each controller individually
- Once all of the controllers have been assigned IDs, select pull-down menu "*Controllers -> Commission*". Then select all controllers and Commission.

Note: Honeywell does not recommend remote commissioning.

- Exit the Program

# Quick Reference:

"Roll over" help text gives the user information about each data field.

Yellow text boxes can be changed by the user.

Program architecture

**RapidZone 2.1**

Start  
Project  
System  
Names  
RTU  
Zones  
Holidays  
Display  
Finish

RTU1 Properties

Heating/Cooling	
Cooling Equipment	2 Stage
Heating Equipment	2 Stage
Economizer	
Output Type	Modulating, 4-20ma
Enable Type	Outdoor Enthalpy
Enable	Select the means by which the economizer is enabled.
Minimum	
Discharge Air Setpt - Deg F	55.0
Motor Speed - Sec	90
Bypass	
Type	Modulating, 4-20ma
Setpoint - inW	0.50
Motor Speed - Sec	90
Default Position - %	66

Advanced>>

Instructions:  
Step 1. Select the Roof Top Unit equipment options.  
Step 2. Click on the Advanced button for more RTU Options.  
Step 3. Click the Next button.

Project: Office Building

<<Back      Next>>

Instruction box guides the user through the configuration process.

Back and Next keys must be used to navigate through the program.