

Excel LONSTATION™

SPECIFICATION DATA



APPLICATION

Excel LONSTATION™ is a low-cost user workstation for monitoring light commercial building systems controlled with the Excel 15 Building Manager, Excel 15 Plant Controller, Excel 10 Unitary Controllers and the T7300F/Q7300H Communicating Thermostat. LONSTATION™ allows users to monitor and modify time-of-day schedules and setpoints at multiple sites, monitor and respond to alarms, and retrieve alarm, trend point or energy usage reports.

LONSTATION™ communicates with controllers through the Serial LonTalk® Adapter (SLTA) over a LONWORKS® digital data network.

FEATURES

- Local and remote monitoring of Honeywell Excel 15/ Excel 10/T7300 controllers.
- Navigation window showing project hierarchy on the left and network details on the right.
- Browser look and feel with Microsoft® Windows™ 95 and 98 Platform.
- View and modify time schedules in Excel 15 Controllers.
- Alarm management.
- View operational data for Alarms, Bypass Status, Runtime and Energy History.
- View trend point activity for up to 16 inputs.
- Convenient right-click floating menus for quick access to LONSTATION™ functions.
- No engineering or site database required.
- Controller and control loop specific displays.
- Quick access point group displays.



SPECIFICATIONS

Minimum Requirements

- Personal Computer with a 266 mHZ Pentium microprocessor, minimum of 64 megabytes (MB) RAM (128 MB RAM preferred), 100 MB disk drive, SVGA monitor and board, and a Microsoft®-compatible mouse.
- Microsoft® Windows 95 operating system Ver. 4.00.950A or 4.00.950B, with Service Pack 1 or Windows 98 Second Edition.

Applicable Literature

- 74-2977 Excel LONSPEC™ Software Release Bulletin.
- 74-2988 Excel LONSTATION™ Software Release Bulletin.
- 74-2967 Excel 15 W7760A Building Manager Specification Data.
- 74-3080 Excel 15 W7760C Plant Controller Specification Data.
- 74-2972 Excel 15 S7760A Command Display Specification Data.
- 74-2942 Excel 10 W7751B,D,F VAVII Controller Specification Data.
- 74-2956 Excel 10 W7750A,B Constant Volume AHU (CVAHU) Controller Specification Data.
- 74-3449 RapidZone Commercial Zoning System Application Guide.
- 74-2698 Excel 10 W7761 Remote Input/Output (RIO) Controller Specification Data.
- 74-2697 Excel 10 T7770A,B,C,D,E,F,G Wall Module Specification Data.

- 74-2962 Excel 10 W7753 Unit Ventilator Controller Specification Data.
- 74-3064 Serial Interface Specification Data.

Applicable Controllers and Devices

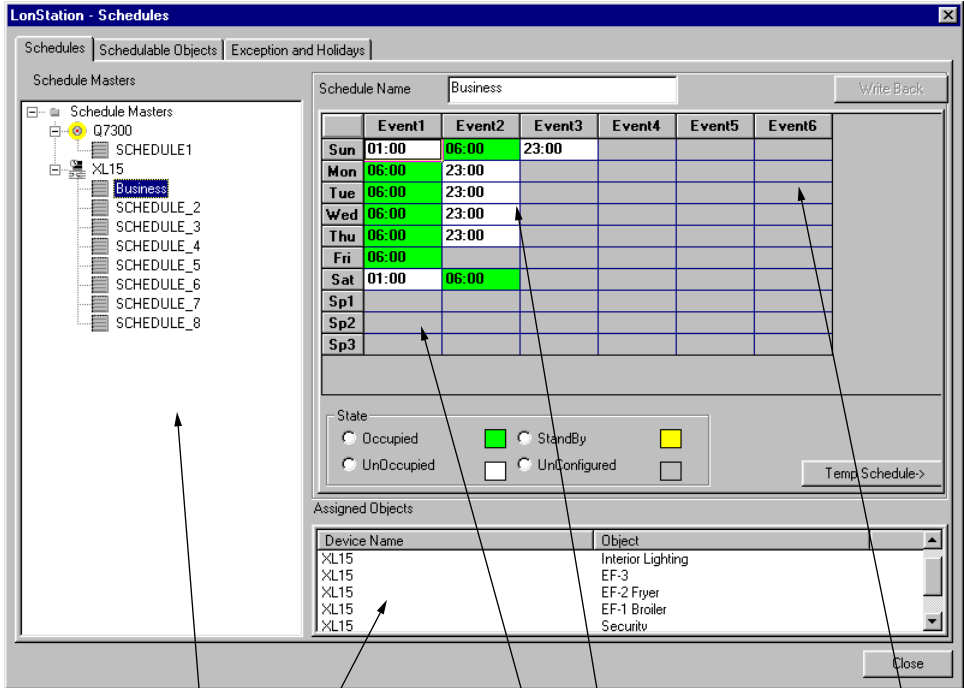
- Q7760A Serial Interface.
- S7760A Excel 15 Command Display.
- T7300F/Q7300H Series 2000 Commercial Thermostat/Communicating Subbase.
- T7770A,B,C,D,E,F,G Wall Module.
- W7750A,B,C CVAHU Controller.
- W7753A Unit Ventilator Controller.
- W7760A Excel 15 Building Manager.
- W7760C Excel 15 Plant Controller
- W7760D Excel 15 RapidZone Controller
- W7761 Remote I/O Controller.

Quick and easy Setup of LonWorks Networks and Sub Networks

LONSPEC™ sets up projects that are collections of one or more controllers. Projects organize controllers and devices into network and sub network groups.

Navigation Window

LONSTATION™ utilizes a navigation tree concept to provide two different views of project information. The example screen below shows schedules for an Excel 15 Building Manager.



LEFT VIEW DISPLAYS A HIERARCHICAL VIEW OF THE SCHEDULES FOR EACH DEVICE

DISPLAYS CONTROLLER NAMES ASSOCIATED WITH THE TIME SCHEDULE

SP1, SP2 AND SP3 DISPLAY SCHEDULE INFORMATION FOR SELECTED DAYS, TEMPORARY DAYS AND HOLIDAYS.

DISPLAYS CURRENT STATE: UNCONFIGURED, OCCUPIED, UNOCCUPIED, OR STANDBY

THE RIGHT VIEW DISPLAYS THE NAME OF THE SCHEDULE, TIME-OF-DAY AND DAY-OF-WEEK ACTIVITIES TO BE PERFORMED

M20590

LONSTATION™ displays alarm events, bypass conditions, control program information, operating data, trend point activity, runtime and energy usage in data logs and allows users to print reports.

An example of the Energy History log, in textual format, is shown below. A description of the logs and special displays follow.

Energy History Log Example

	Date	Energy (KWH)	Peak power (KW)	Peak Time	Degree Day
1	12/9/1998	11011.500000	154.800000	16:11:00	41.30000
2	12/8/1998	10982.300000	109.900000	11:14:00	30.70000
3	12/7/1998	11038.900000	147.700000	17:31:00	38.20000
4	12/6/1998	11094.500000	142.300000	16:41:00	44.70000
5	12/5/1998	11074.500000	168.500000	15:32:00	43.90000
6					
7					
8					
9					
10					
11					
12					
13					
14					
15					
16					
17					
18					
19					
20					
21					
22					
23					

Energy History Log—Energy usage data for up to 35 days. Energy data include the energy consumed (kWh), peak load (kW), time of peak load and degree days.

Alarm History Log—Displays the alarm events (activation or return-to-normal conditions). Each alarm in the log includes the date/time, source and type of alarm.

Time of Day (TOD) Bypass Log—Displays bypass conditions for all scheduled control loops. For each control loop the log contains the number of minutes in bypass for the current and previous month and the most recent date/time of bypass.

Runtime Log—Displays operating data for up to 15 digital inputs or outputs. Runtime data includes the number of complete hours the input/output has been active. A user can individually clear each entry in the runtime log.

Special Displays—Displays complete information for control programs in the Excel 15 Controllers. Sensor values, control mode, control setpoint and point output status. Allows authorized users to modify setpoints, enable and disable control programs and provide manual override of output points.

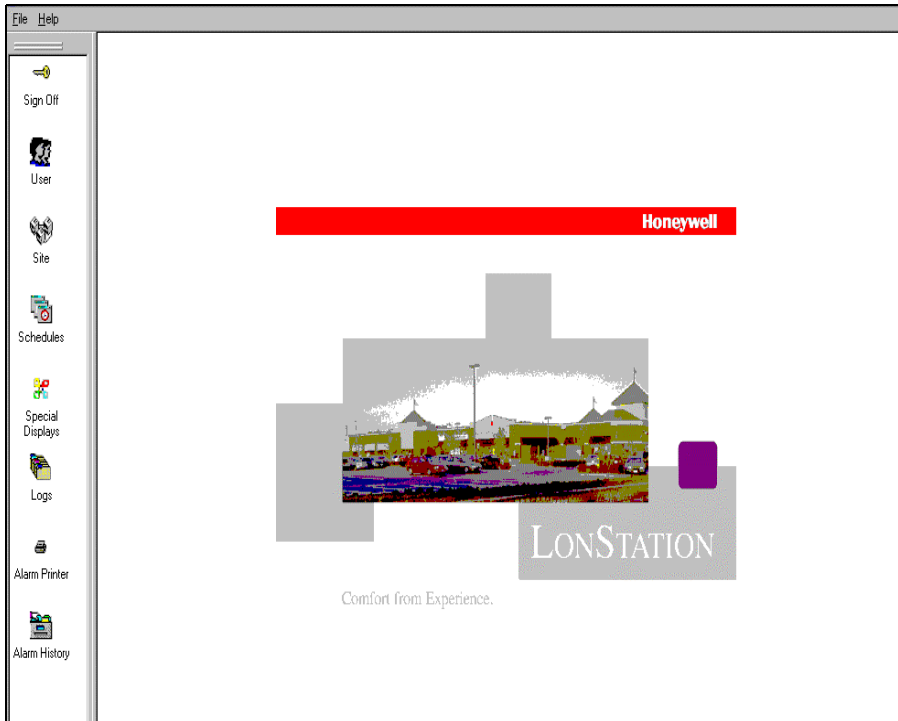
Trend Log—Displays point activity for up to 16 points. Each trend point includes the date, time and value for each sample. Trend log data is useful to pinpoint maintenance needs and to fine-tune building operations.

Control Services Supported

The quick access icons on the LONSTATION™ initial display screen allow quick and easy access to system services. The user clicks on the desired icon and is either connected to a dialog box to designate a specific site, or is immediately

presented with the desired service screen. The user can return to the initial display screen at any time by closing the service screen.

System Services Icons



Sign On—Allows the user to sign on or off the system.

User—LONSTATION™ can support an unlimited number of users and is password protected.

Site—Supports up to 255 sites. Users can establish communication, make changes, and quickly end communication while moving from site to site. By using a simple browser type interface, users can make daily changes to time-of-day schedules and temperature setpoints at multiple sites.

Schedules—Displays all schedule devices and their associated schedules. Schedules may be viewed from controller or scheduler point-of-view.

Special Displays—Predefined displays start/stop loops, control loops and Demand Limit Control (DLC) information.

Logs—Provides display and modification of Trend, Bypass, Runtime and Energy logs.

Alarm Printer—Prints the alarm type, description, and time stamp as soon as it is received.

Alarm History—Displays alarm history log.

LONSTATION™ is a trademark of Echelon® Corporation.

LONMARK®, LonTalk®, and LONWORKS® are registered trademarks of Echelon® Corporation.

Microsoft® is a registered trademark of Microsoft, Inc.

Windows™ is a trademark of Microsoft, Inc.

Honeywell

Automation and Control Solutions

Honeywell	Honeywell Limited-Honeywell Limitée
1985 Douglas Drive North	35 Dynamic Drive
Golden Valley, MN 55422	Scarborough, Ontario
	M1V 4Z9

