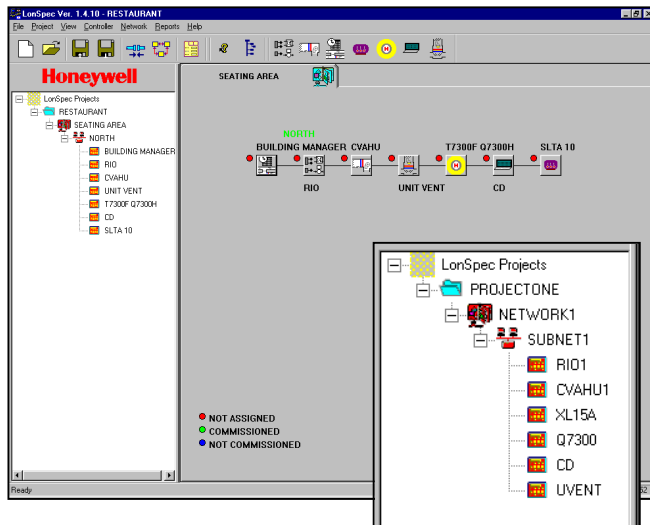


Excel LonSpec™

SPECIFICATION DATA



FEATURES

- Easy-to-use drag-and-drop setup of LonWorks® Networks and devices.
- Simple configuration, monitoring and binding of Excel 15 Building Managers, Excel 15 Plant Controller and Command Displays, Excel 10 Controllers and T7300F/Q7300H Commercial Thermostats/Communicating Subbases.
- Automatic and customizable data sharing between controllers on a network.
- On-line operation with monitoring and diagnostic/manual functions.
- Navigation window showing project hierarchy on the left side and network details on the right.
- Convenient right-click floating menus for quick access to LonSpec functions.
- Microsoft® Windows™ 98, Me, and 2000 Platform.
- On-line help.

APPLICATION

Excel LonSpec is a software package used for the configuration and commissioning of Excel 15 Building Managers, Excel 15 Plant Controller and Command Displays, T7300F/Q7300H Thermostat/Communicating Subbases and the Excel 10 controllers.

LonSpec allows operators to create networks and controllers, customize Honeywell application-specific controllers, and program Excel 15 Building Managers. The user then specifies data sharing between controllers on the network, commissions the controllers, and monitors system behavior.

Navigation Window

Project Hierarchy (left) and Network Details (right)

The LONSPEC™ window is split into two panes to provide two different views of project information. The left view is a hierarchical layout of project components such as networks, sub networks, controllers, and other devices. The right view graphically shows the controllers and devices on the selected network.

The panes can be resized to show more or less of either view. Operators can click a tool bar button to remove the hierarchical view from the window and maximize the graphical view.



SPECIFICATIONS

Minimum Requirements

- Personal Computer with a 266 mHZ Pentium microprocessor, minimum of 128 megabytes (MB) RAM, 100 MB free disk space, SVGA monitor and board, and a Microsoft®-compatible mouse.
- Microsoft® Windows 98 Second Edition operating system, Windows Millennium Edition (Me) or Windows 2000 with Service Pack 2 or above.

Applicable Literature

- 74-2977 Excel LONSPEC™ Software Release Bulletin.
- 74-2988 Excel LONSTATION™ Software Release Bulletin.

Excel 15 Building Manager and Command Display and Excel 10 Controller Specification Data Sheets:

- 74-2967 Excel 15 W7760A Building Manager Specification Data.
- 74-2972 Excel 15 S7760A Command Display Specification Data.
- 74-2956 Excel 10 W7750A,B Constant Volume AHU (CVAHU) Controller Specification Data.
- 74-2698 Excel 10 W7761 Remote Input/Output (RIO) Controller Specification Data.
- 74-2697 Excel 10 T7770A,B,C,D,E,F,G Wall Module Specification Data.

- 74-2962 Excel 10 W7753 Unit Ventilator Controller Specification Data.
- 74-3064 Serial Interface Specification Data.

Applicable Controllers and Devices

- Q7760A Serial Interface.
- S7760A Excel 15 Command Display.
- T7300F/Q7300H Series 2000 Commercial Thermostat/Communicating Subbase.
- T7770A,B,C,D,E,F,G Wall Module.
- W7750A,B,C CVAHU Controller.
- W7753A Unit Ventilator Controller.
- W7760A Excel 15 Building Manager.
- W7760C Excel 15 Plant Manager.
- W7761A Remote I/O Controller.

Quick and Easy Setup of LONWORKS® Networks and Sub Networks

LONSPEC™ sets up projects that are collections of one or more controllers. Projects organize controllers and devices into network and sub network groups.

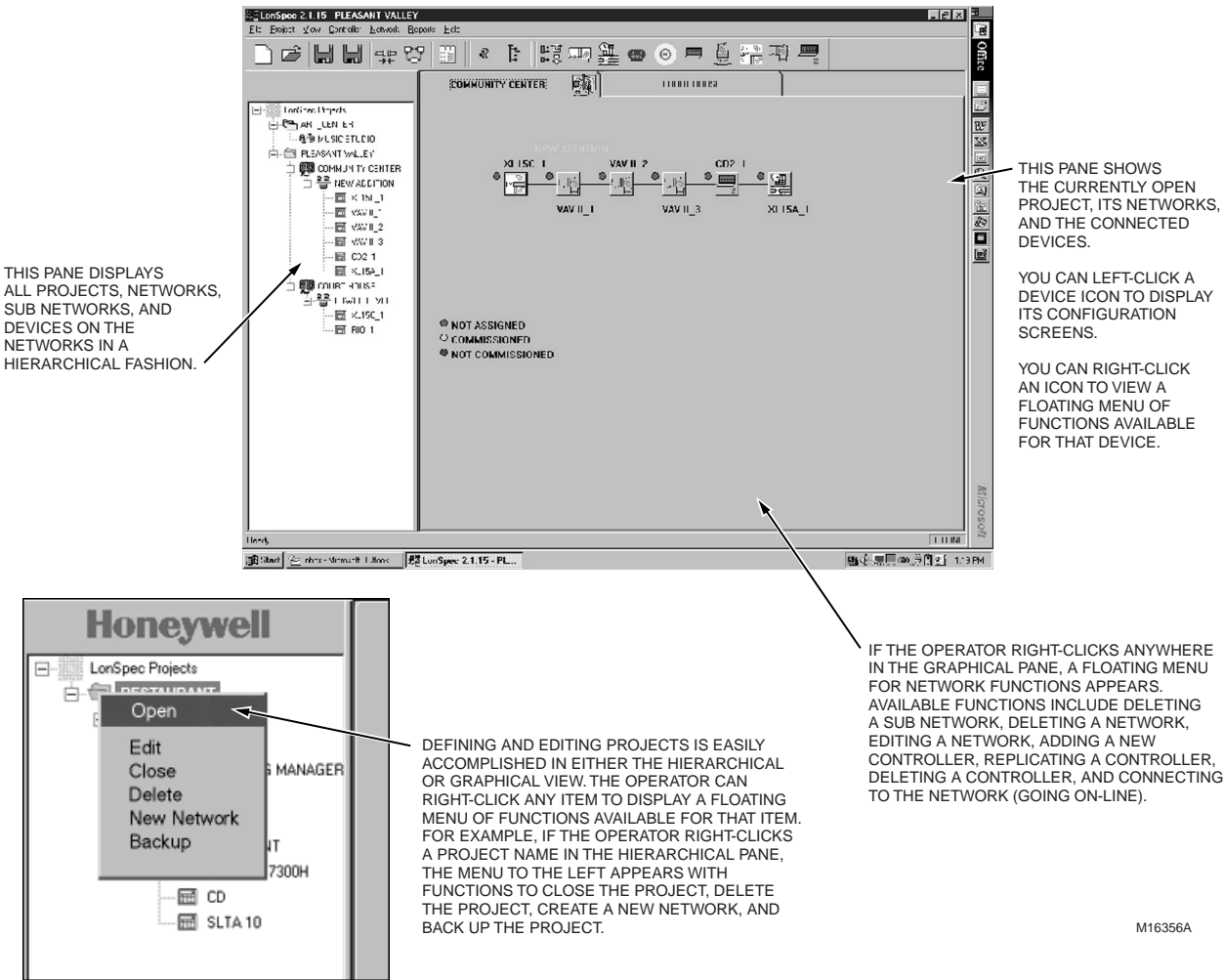
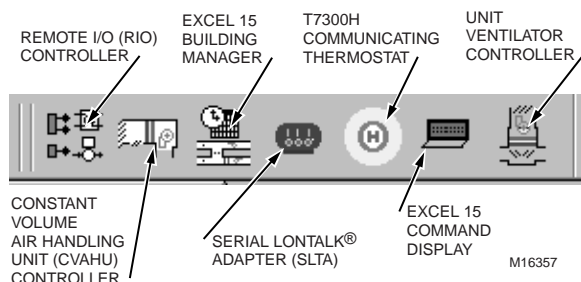


Fig. 1. LONSPEC™ Window Example.

Controller Tool Bar Buttons Example



Simple, Custom Configuration of Excel 15 Building Managers, Plant Controller, Excel 10 Controllers and T7300H Communicating Thermostats

After the operator drags and places a controller icon on a sub network, the operator can configure desired options simply by clicking the icon. For example, when an operator clicks a CVAHU Controller icon, the following configuration screen appears.

The operator can choose to keep the defaults as is, or set desired options such as heating/cooling cycles per hour, setpoint, minimum on/off times, outdoor air temperature lockout, minimum recovery ramp and outside air temperature and fan run-on time.

Commissioning of Excel 15 Building Managers, Plant Controller, Excel 10 Controllers and T7300H Communicating Thermostats

LONSPEC™ handles controller commissioning by downloading the configured data file with its Neuron® ID* to the controller. Operators assign the Neuron® ID to the controller either by typing it in a dialog box, or by just pressing the Service Pin button on the controller.

* A Neuron® ID is a unique 48-bit identifier provided by each Neuron® chip. It is permanently written into the EEPROM during chip manufacture. Each controller has a Neuron® chip. A tear-off Neuron® ID label is included with each controller.

Automatic and Customizable Data Sharing Between Controllers on a Network

LONSPEC™ allows sharing of data among controllers connected to a network. In some cases this is automatic, in others, operators require special data sharing. LONSPEC™ enables operators to specify the data values that are shared between controllers. Data values in a controller represent many control functions, for example, fan speed, damper position and temperature. LONSPEC™ presents a list of data values in each controller and allows operators to select which data values should be shared with other controllers. Operators also specify which controllers should receive the values.

LONSPEC™ Features Supported

Monitoring and Report Functions

LONSPEC™ can operate in either an on-line or off-line mode. In the on-line mode, LONSPEC™ communicates with the devices on the network and can monitor device functions. LONSPEC™ can also configure the database in the controller and commission the controller. In Manual Mode, software places the controller application in off-line mode and operators can view and command the outputs within the context of the application.

LONSPEC™ OFFERS THE FOLLOWING REPORTS IN ON-LINE MODE:

Device Status

Listing of information about each device in a project including device name, type, domain ID, sub network/node ID, Neuron® ID, node state, last reset cause and last error logged.

Alarms

Listing of all current controller alarms and a history of the last fifty alarms.

Communication Statistics

Listing of the built-in diagnostics results for project devices.

Document Project

Network and project summary reports and device configuration.

Device Status and **Document Project** are also available in off-line mode.

On-Line Help

Each LonSpec dialog box includes a **Help** button that displays on-line help and general information relating to LonSpec operation. Specific procedures, such as how to define a network and how to commission a controller, are also displayed. The operator can also press the **F1** button at any time to access on-line help and general information.

LONSPEC™ and LONSTATION™ are trademarks of Echelon® Corporation.

LONWORKS®, LONMARK®, LonTalk®, and Neuron® are registered trademarks of Echelon® Corporation.

Honeywell

Automation and Control Solutions

Honeywell	Honeywell Limited-Honeywell Limitée
1985 Douglas Drive North	35 Dynamic Drive
Golden Valley, MN 55422	Scarborough, Ontario
	M1V 4Z9

ACS Control Products

Honeywell AG
Böblinger Straße 17
D-71101 Schönaich
Phone (49-7031) 637-01
Fax (49-7031) 637-493

